

FROCA

colors.

FROCA

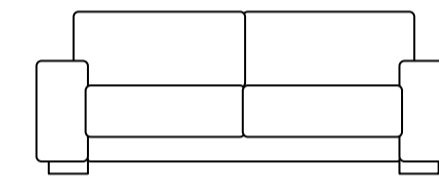




colors.

beautiful fabrics

Creando tejidos de tapicería y decoración desde 1967.
Creating upholstery and decoration fabric since 1967.



f FROCA

www.froca.com



TEMPERA 02



TROCADERO 02



BRUNEI 05



BRUNEI 21



RENOIR 02



KLIMT 01



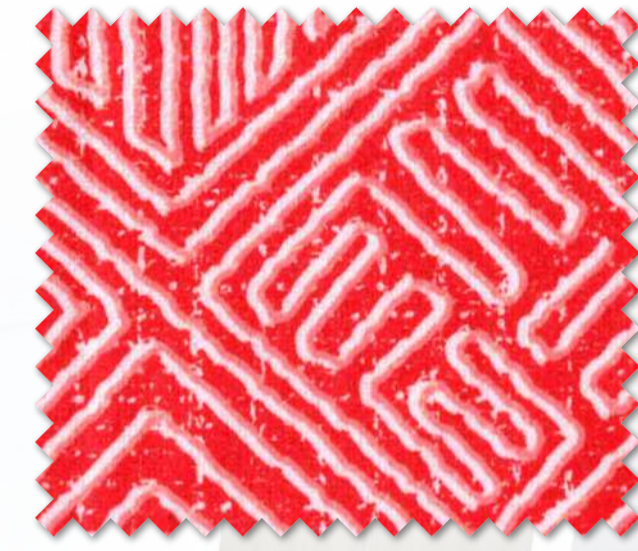
NAZCA 01



www.froca.com



BOTICELLI 03



NAZCA 02



BRUNEI 24



BRUNEI 01

01	BRUNEI 05	12	TEMPERA 02
02	BOTICELLI 03	13	BOTICELLI 03
03	NAZCA 02	14	BRUNEI 21
04	TROCADERO 02	15	BRUNEI 01
05	BRUNEI 24	16	BRUNEI 01
06	RENOIR 02	17	BRUNEI 21
07	NAZCA 02	18	KLIMT 01
08	BRUNEI 01	19	BRUNEI 01
09	RENOIR 02	20	NAZCA 01
10	NAZCA 02	21	BRUNEI 21
11	NAZCA 02	22	NAZCA 01



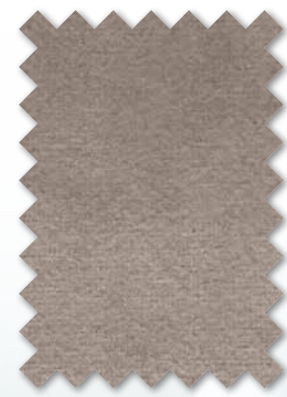
www.froca.com



KLIMT 03



BRUNEI 02



BRUNEI 03



NAZCA 01



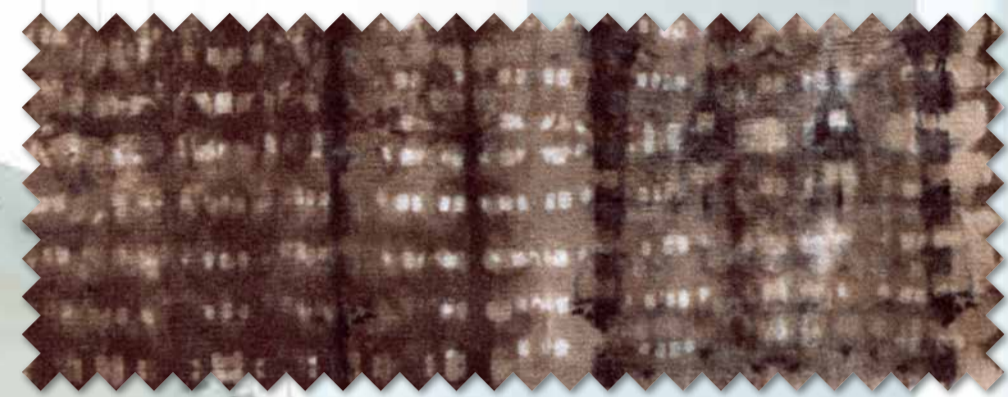
BALLET 03



RENOIR 03



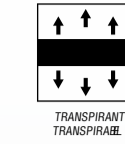
BRUNEI 26



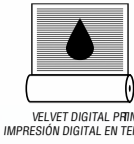
BOSFORO 02



PANTEON 03



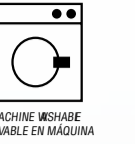
TRANSPARENT
TRANSPARENT



MELJET DIGITAL P&N
IMPRESIÓN DIGITAL EN TERCIPELO



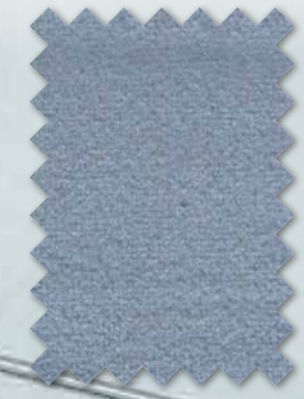
TEXTILES
DE CONFIANZA
Certificado de acreditación número
según Oeko-Tex® Standard 100
20064/0264
ATEX



MACHINE WASHABLE
LAVABLE EN MÁQUINA



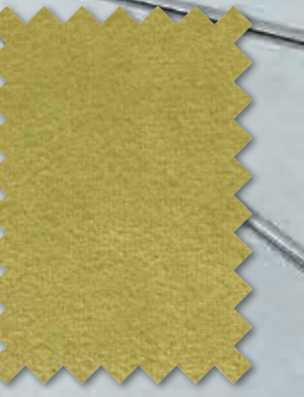
www.froca.com



BRUNEI 34



BRUNEI 03



BRUNEI 43



www.froca.com



2



4

3

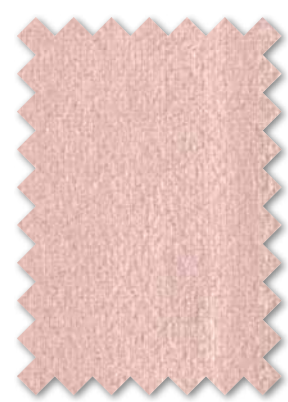
01	PANTEON 03	03	BALLET 03
02	BRUNEI 26	04	BRUNEI 34



MATISSE 01



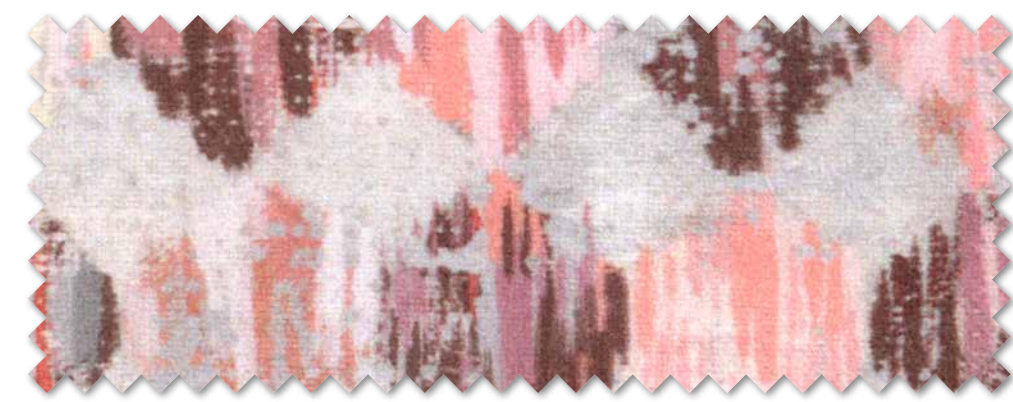
BALLET 03



BRUNEI 30



BRUNEI 05



BOTICELLI 01



RENOIR 02



PARC 02



EIFFEL 03



CABARET 02



FROCA

www.froca.com



BRUNEI 19

FROCA

www.froca.com



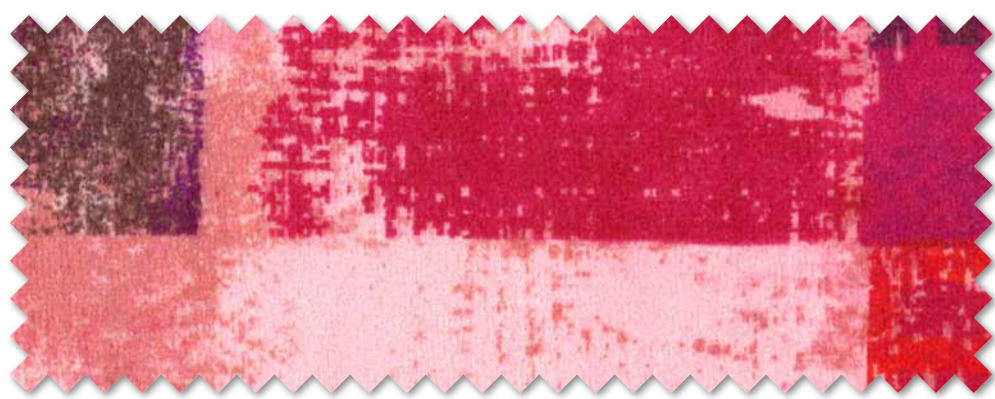
BRUNEI 29



01	MATISSE 01	07	BALLET 03	13	BRUNEI 30	19	BOTICELLI 01
02	CABARET 02	08	EIFFEL 03	14	EIFFEL 03	20	BRUNEI 30
03	BRUNEI 30	09	BALLET 03	15	BRUNEI 05	21	BRUNEI 30
04	PARC 02	10	PARC 02	16	BOTICELLI 01	22	CABARET 02
05	MATISSE 01	11	MATISSE 01	17	BRUNEI 30	23	RENOIR 02
06	BRUNEI 19	12	CABARET 02	18	PARC 02	24	BRUNEI 05



BRUNEI 03



TEMPERA 03



SOROLLA 01



PANTEON 02



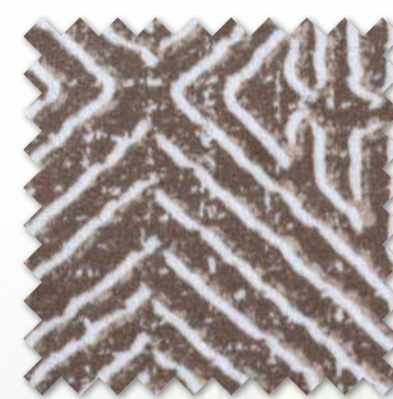
BRUNEI 28



BRUNEI 27



BRUNEI 20



NAZCA 03



MONTMARTRE 02



BRUNEI 30



MATISSE 02



MONET 02



BRUNEI 25



BOSFORO 03



1

2

3

4

5

6

7

12



8

9

10

01	BRUNEI 30	07	NAZCA 03
02	NAZCA 03	08	BRUNEI 03
03	BOSFORO 03	09	MONTMARTRE 02
04	BRUNEI 28	10	BRUNEI 28
05	TEMPERA 03	11	MONET 02
06	BRUNEI 28	12	BRUNEI 30



www.froca.com



EIFFEL 02



PARC 03



BRUNEI 03



BALLET 02



PIGALLE 02



BRUNEI 08



VELETTE 02



BRUNEI 19



www.froca.com



TROCADERO 02



VELETTE 02



OPERA 02



BRUNEI 12



BRUNEI 23

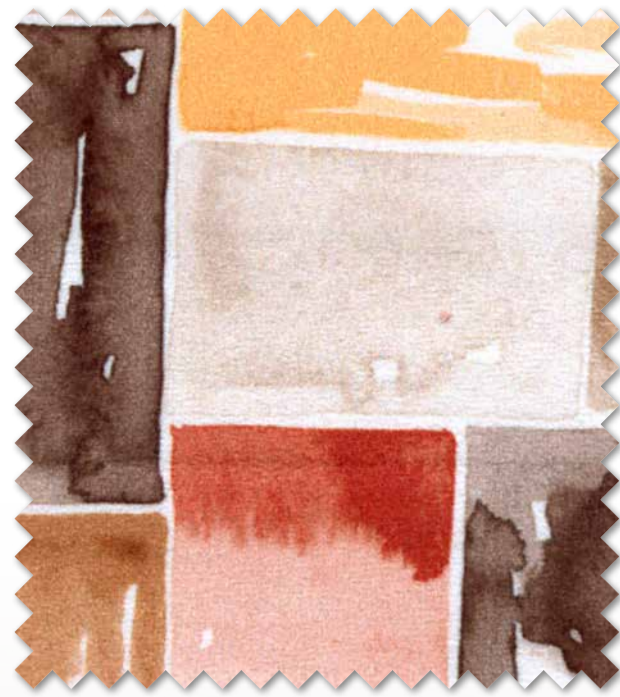
01	BRUNEI 19	12	BRUNEI 03
02	EIFFEL 02	13	BRUNEI 03
03	BRUNEI 03	14	BRUNEI 23
04	OPERA 02	15	PIGALLE 02
05	BALLET 02	16	VELETTE 02
06	BRUNEI 12	17	BRUNEI 03
07	BRUNEI 03	18	BRUNEI 23
08	BRUNEI 19	19	BRUNEI 12
09	TROCADERO 02	20	PARC 03
10	BRUNEI 10	21	BRUNEI 03
11	OPERA 02	22	OPERA 02



www.froca.com



BOSFORO 04



VEDETTE 03



BRUNEI 17



OPERA 03



KLIMT 02



PIGALLE 03



BRUNEI 09



BRUNEI 08



BRUNEI 15



www.froca.com



BRUNEI 12



BRUNEI 10



01	BOSFORO 04	07	BRUNEI 08	13	OPERA 03	19	KLIMT 02
02	OPERA 02	08	OPERA 03	14	KLIMT 02	20	BRUNEI 10
03	BRUNEI 12	09	BRUNEI 12	15	PIGALLE 03	21	VEDETTE 03
04	OPERA 03	10	BRUNEI 08	16	OPERA 03	22	BRUNEI 17
05	BRUNEI 08	11	BOSFORO 04	17	BRUNEI 12	23	BRUNEI 15
06	BRUNEI 17	12	VEDETTE 03	18	BRUNEI 08	24	BOSFORO 04



SOROLLA 03



TROCADERO 01



OPERA 01



www.froca.com



MATISSE 01



BRUNEI 19



BRUNEI 04



TROCADERO 03



BRUNEI 38



TEMPERA 01



RENOIR 02



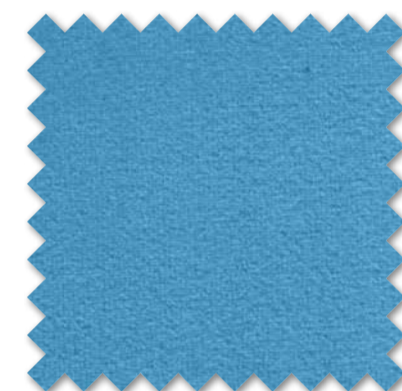
BALLET 01



RENOIR 01



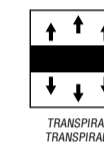
BRUNEI 37



BRUNEI 36



01	BRUNEI 37	03	BRUNEI 36
02	TROCADERO 03	04	TEMPERA 01



TRANSPARENT TRANSPARENT



VELVET DIGITAL PRIM IMPRESSION DIGITAL EN TERCIPELO



TEXTILES DE CONFIANZA Control de sustancias nocivas según Oeko-Tex® Standard 100 000A1514



MACHINE WASHABLE LAABLE EN MÁQUINA



www.froca.com



SOROLLA 02



PANTEON 04

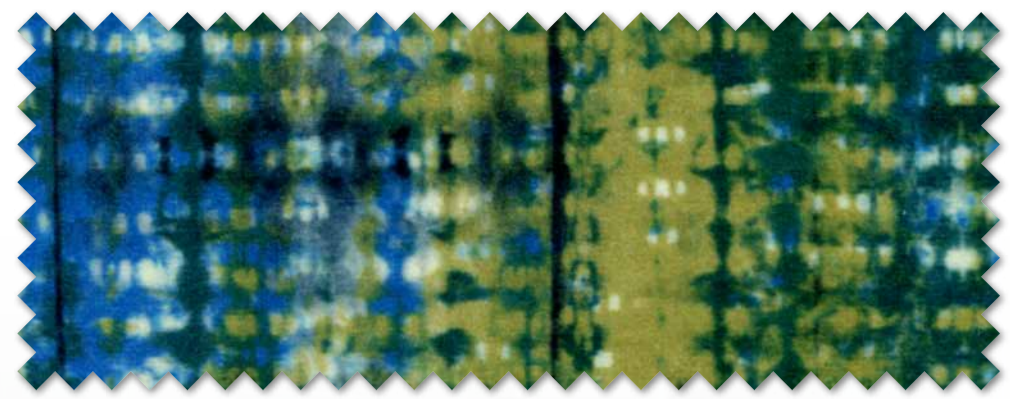


www.froca.com





VEDETTE 01



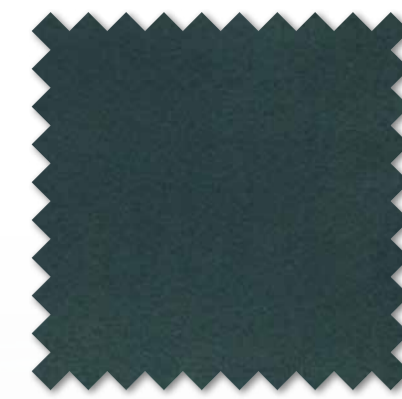
BOSFORO 01



BRUNEI 08



EIFFEL 01



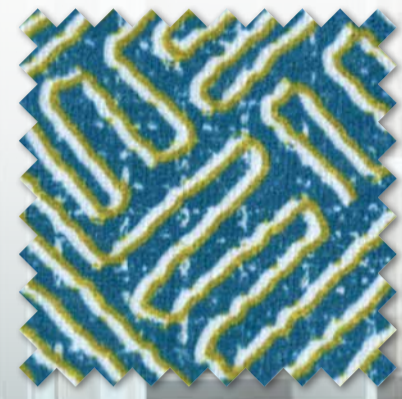
BRUNEI 39



BRUNEI 38



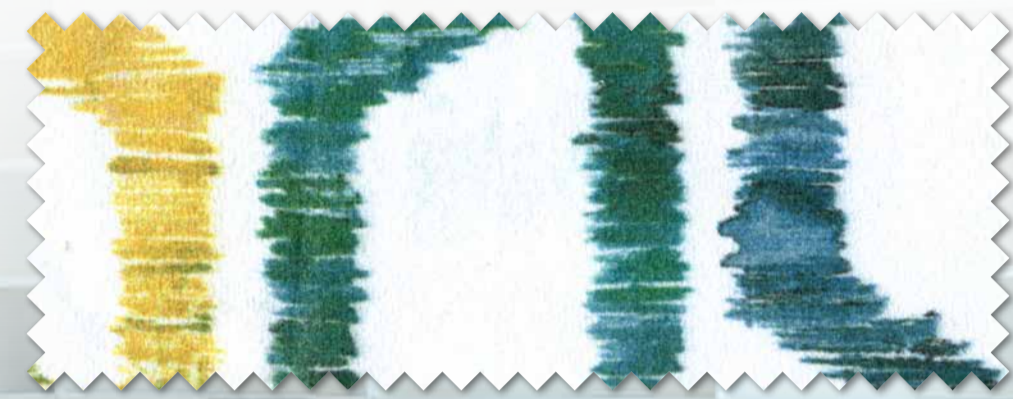
MONET 01



NAZCA 04



www.froca.com



MATISSE 03

01	VEDETTE 01	06	MATISSE 03
02	BOSFORO 01	07	MONET 01
03	CABARET 01	08	MONTMARTRE 01
04	BRUNEI 08	09	BRUNEI 38
05	BRUNEI 39	10	NAZCA 04



PANTEON 01



BRUNEI 40



BRUNEI 41



CABARET 01



BOTICELLI 03



MONTMARTRE 01



www.froca.com



BRUNEI 33



BALLET 01



PARC 03



BOSFORO 04



OPERA 03



BRUNEI 12



TROCADERO 03



BRUNEI 03



KLIMT 02



MONTMARTRE 04



BRUNEI 38



FROCA

www.froca.com

01	BRUNEI 03	03	PARC 03
02	BALLET 01	04	MONTMARTRE 04

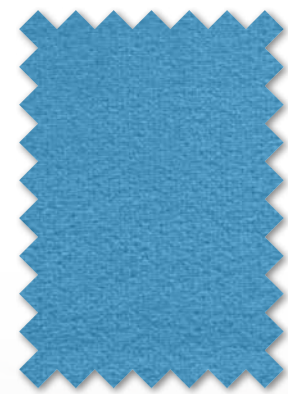
FROCA
www.froca.com



BRUNEI 19



BALLET 02



BRUNEI 36



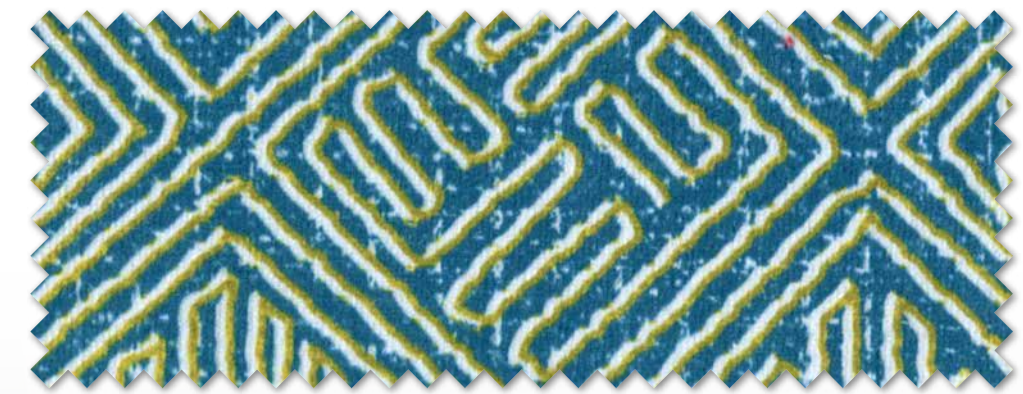
BRUNEI 22



SOROLLA 02



MONET 01



NAZCA 04



BRUNEI 44

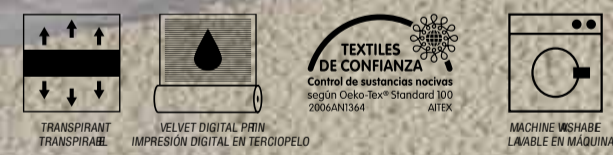


BRUNEI 39

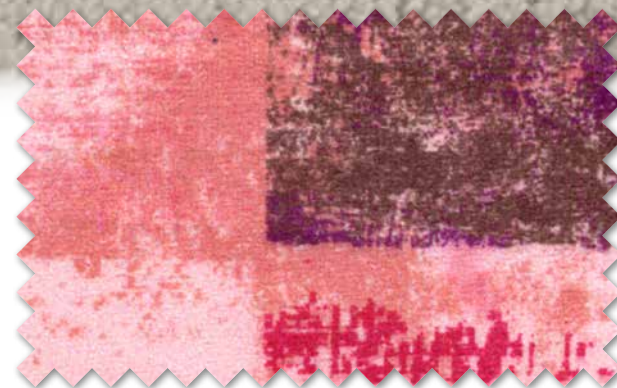


www.froca.com

01	TEMPERA 03	09	NAZCA 04
02	BRUNEI 22	10	MONET 01
03	BRUNEI 44	11	BALLET 02
04	SOROLLA 02	12	CABARET 03
05	NAZCA 04	13	BRUNEI 31
06	BRUNEI 44	14	BALLET 02
07	SOROLLA 02	15	SOROLLA 02
08	BRUNEI 39	16	BALLET 02



www.froca.com



TEMPERA 03



BRUNEI 20



CABARET 03



BRUNEI 31



MONTMARTRE 03



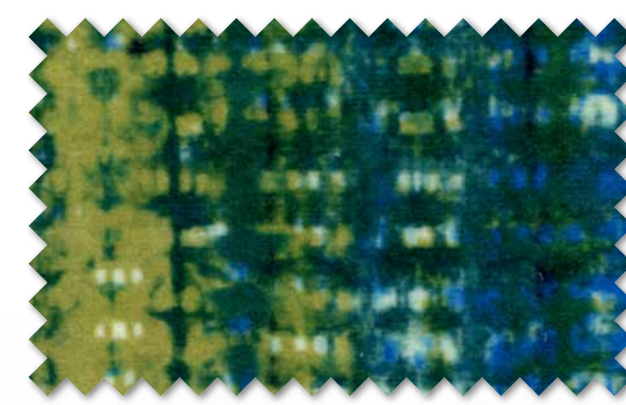
BALLET 01



BRUNEI 41



BRUNEI 45



BOSFORO 01



BRUNEI 26



SOROLLA 01



BRUNEI 01



BRUNEI 36



www.froca.com



BRUNEI 35



EIFFEL 01



2



3



5



7



8



10



12



PARC 01



BRUNEI 21



BRUNEI 32



PIGALLE 01



01	MONTMARTRE 03	09	BRUNEI 41	17	BRUNEI 26
02	BRUNEI 01	10	EIFFEL 01	18	BRUNEI 36
03	BALLET 01	11	BRUNEI 35	19	MONTMARTRE 03
04	BRUNEI 36	12	SOROLLA 01	20	BRUNEI 41
05	PARC 01	13	BRUNEI 26	21	BRUNEI 36
06	BRUNEI 33	14	MONTMARTRE 04	22	BRUNEI 35
07	PIGALLE 01	15	BRUNEI 26	23	SOROLLA 02
08	BOSFORO 01	16	SOROLLA 01	24	BOSFORO 01



BRUNEI 33

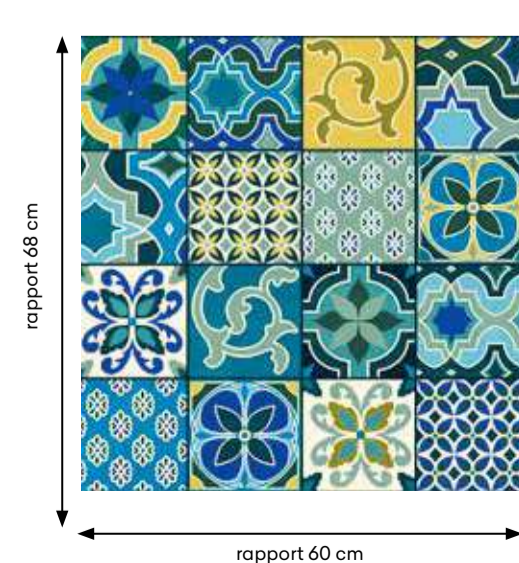
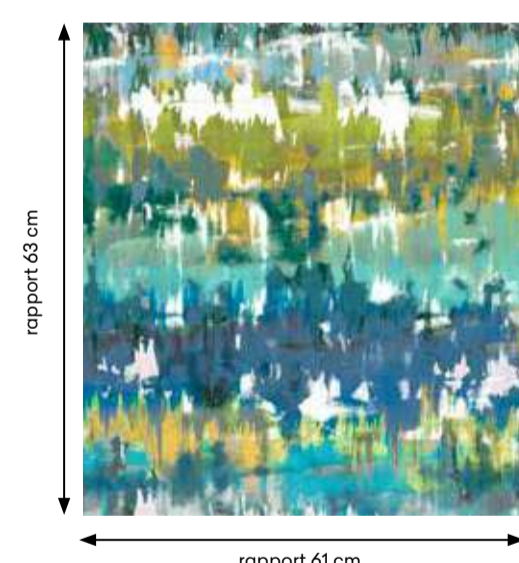
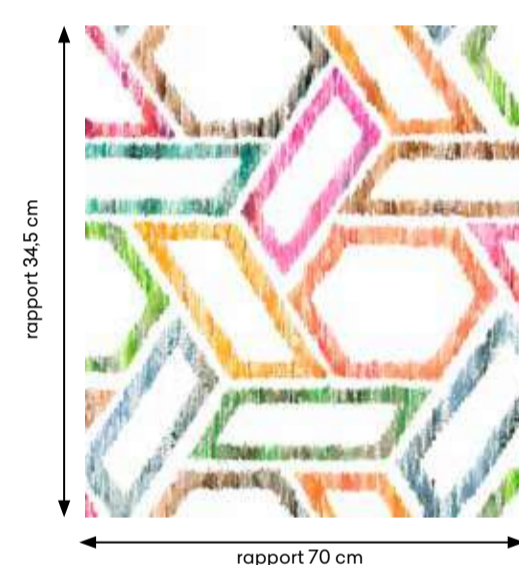
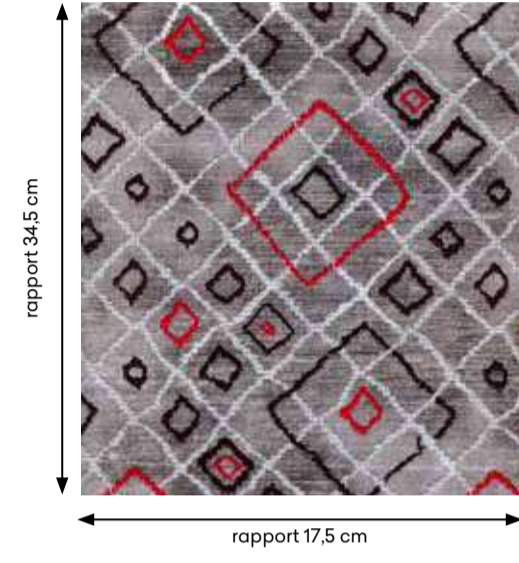
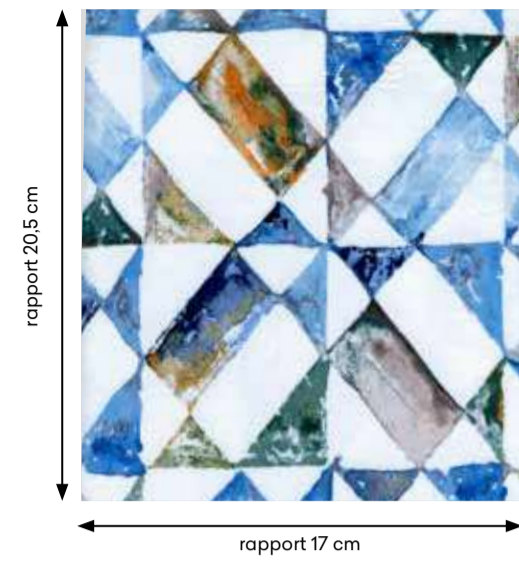
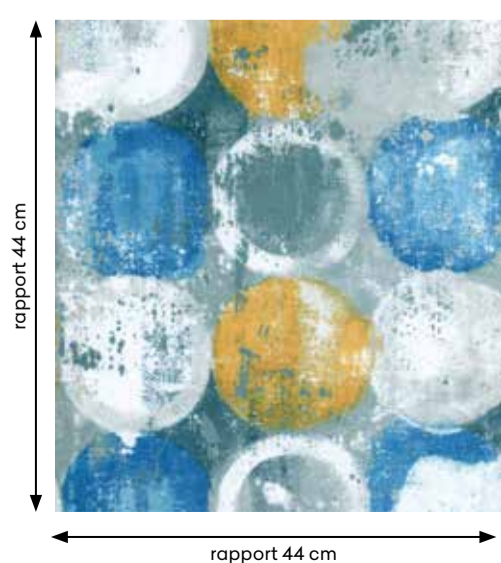
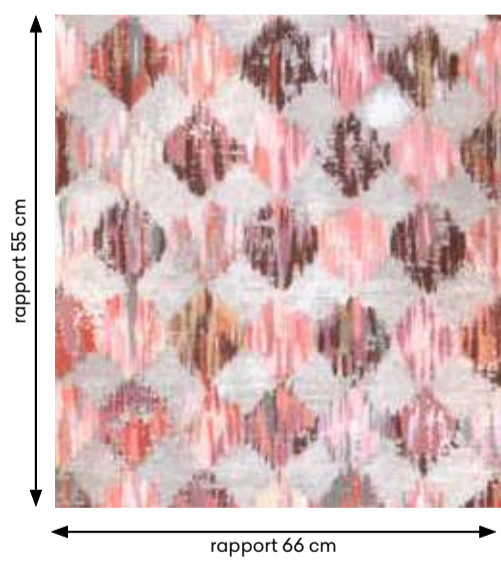
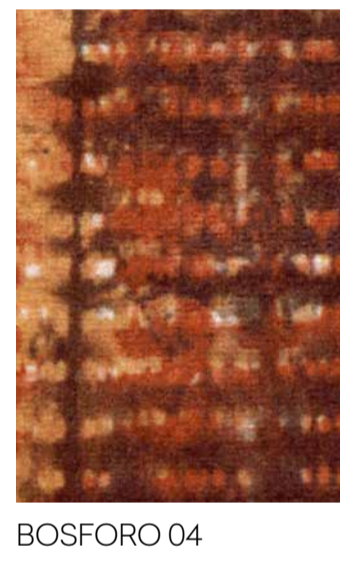
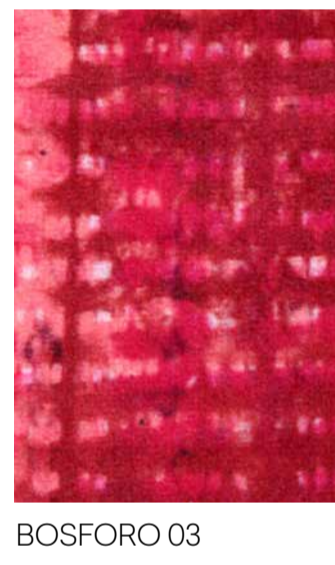
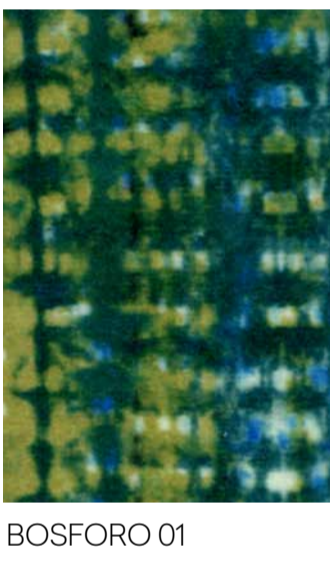
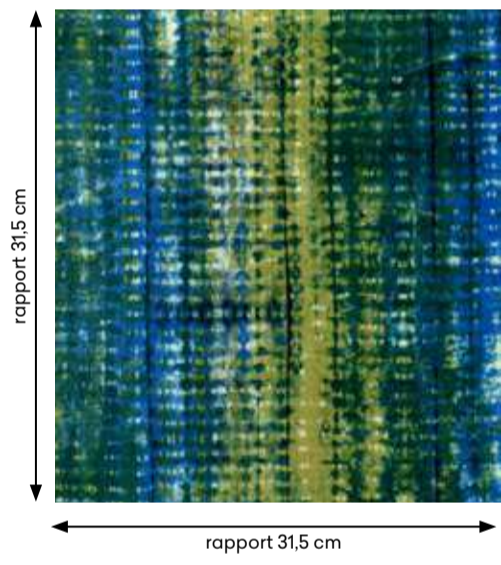
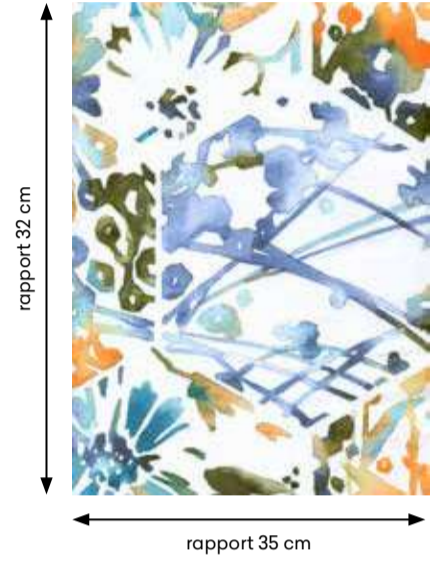


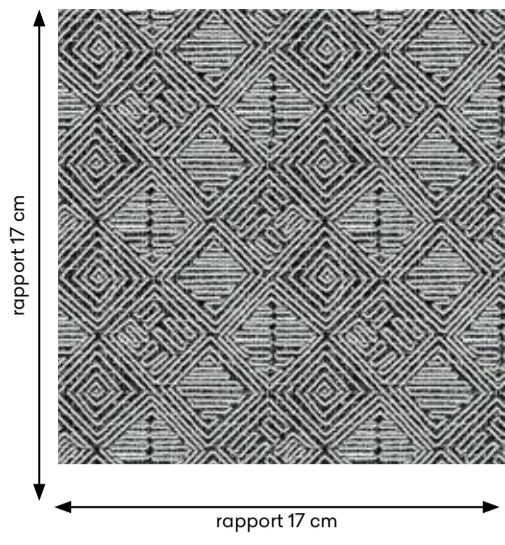
www.froca.com



Rapport colección tejidos.

Textile rapport collection.





NAZCA 01



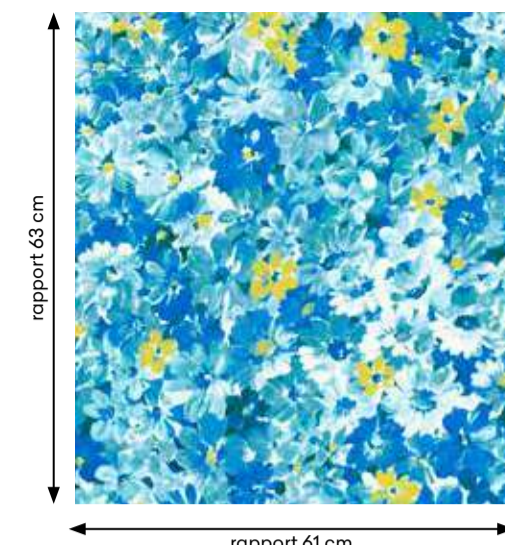
NAZCA 02



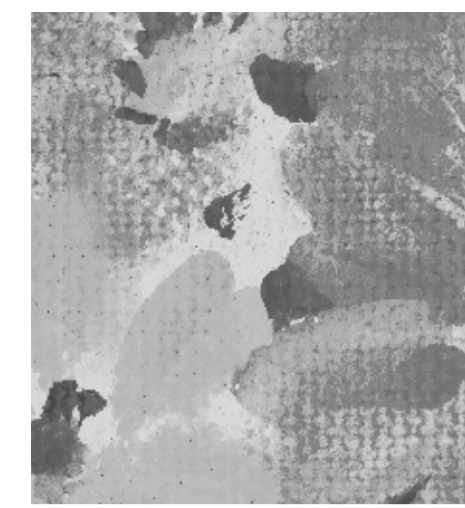
NAZCA 03



NAZCA 04



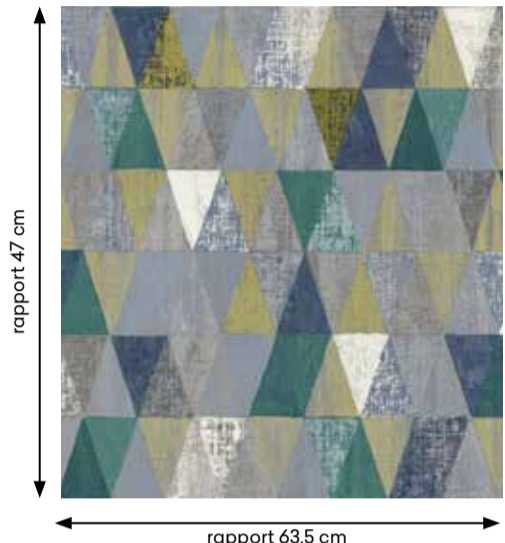
RENOIR 01



RENOIR 02



RENOIR 03



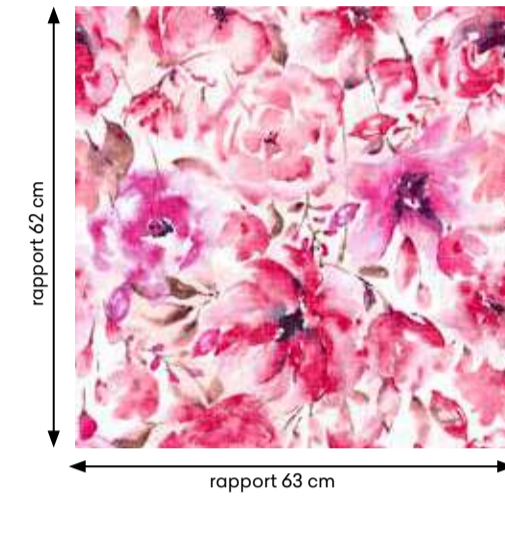
OPERA 01



OPERA 02



OPERA 03



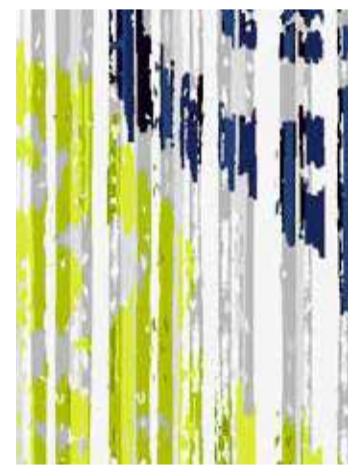
SOROLLA 01



SOROLLA 02



SOROLLA 03



PANTEON 01



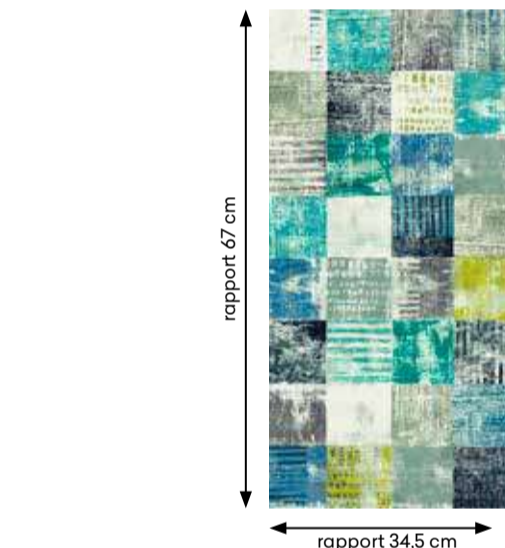
PANTEON 02



PANTEON 03



PANTEON 04



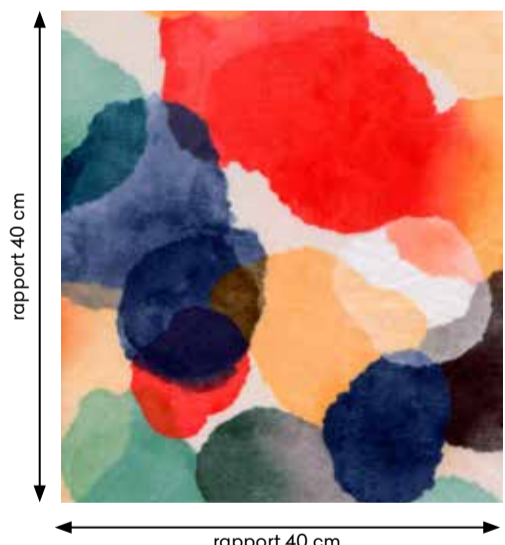
TEMPERA 01



TEMPERA 02



TEMPERA 03



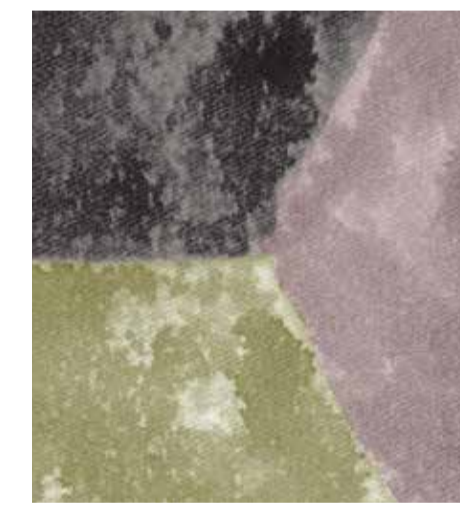
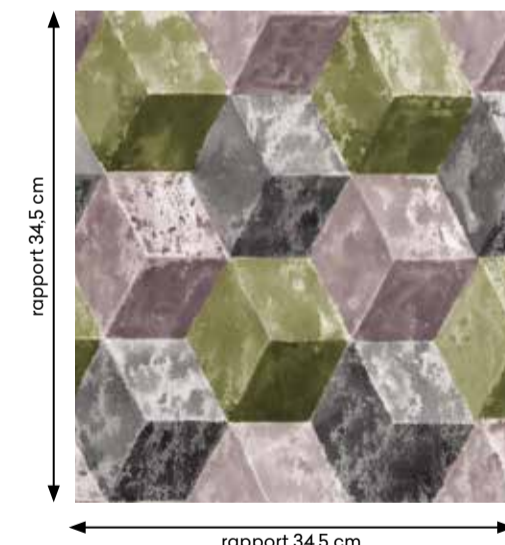
PARC 01



PARC 02



PARC 03



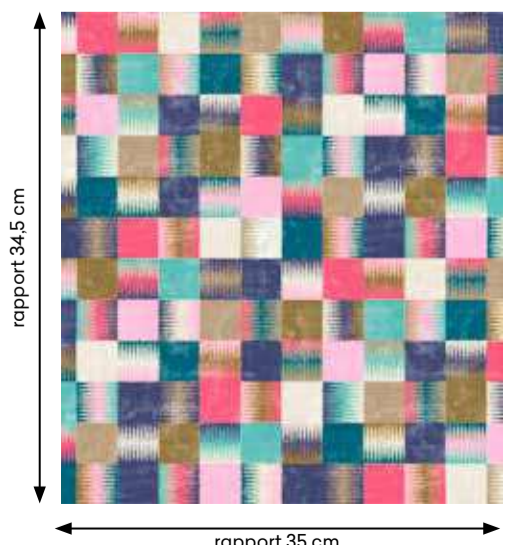
TROCADERO 01



TROCADERO 02



TROCADERO 03



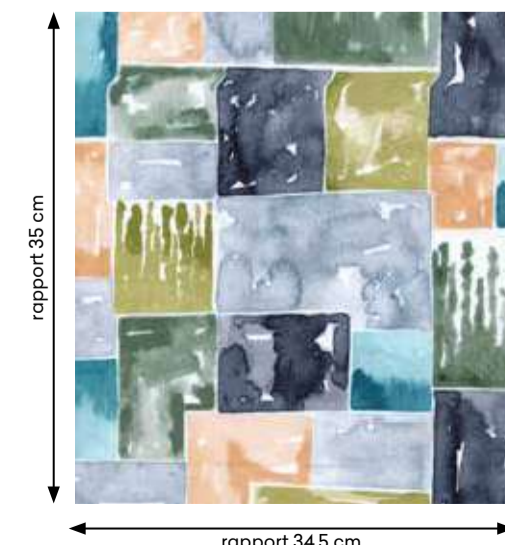
PIGALLE 01



PIGALLE 02



PIGALLE 03



VELETTE 01



VELETTE 02



VELETTE 03



www.froca.com



BRUNEI 01 BRUNEI 02 BRUNEI 03



BRUNEI 04 BRUNEI 05 BRUNEI 06 BRUNEI 07 BRUNEI 08 BRUNEI 09 BRUNEI 10



BRUNEI 11 BRUNEI 12 BRUNEI 13 BRUNEI 14 BRUNEI 15 BRUNEI 16 BRUNEI 17



BRUNEI 18 BRUNEI 19 BRUNEI 20 BRUNEI 21 BRUNEI 22 BRUNEI 23 BRUNEI 24



BRUNEI 25 BRUNEI 26 BRUNEI 27 BRUNEI 28 BRUNEI 29 BRUNEI 30 BRUNEI 31



BRUNEI 32 BRUNEI 33 BRUNEI 34 BRUNEI 35 BRUNEI 36 BRUNEI 37 BRUNEI 38



BRUNEI 39 BRUNEI 40 BRUNEI 41 BRUNEI 42 BRUNEI 43 BRUNEI 44 BRUNEI 45



www.froca.com

características técnicas.

technical specifications · spécifications techniques

Ballet. Bosforo. Boticelli. Cabaret. Eiffel. Klimt. Matisse. Monet. Montmartre. Nazca. Opera. Panteon. Parc. Pigalle. Renoir. Sorolla. Tempera. Trocadero. Vedette.

COMPOSICIÓN Composition / Composition	100% PES.	
ANCHO Width / Largeur	140 cm · 54 in.	
PESO Weight / Poids	290 gr/m ² · 406 gr/ml	
RESISTENCIA DE LAS COSTURAS Seam strength / Résistance des coutures	Urdimbre Warp. Châine 19 mm Trama Weft. Trame 2.0 mm	BS 3320:1988 BS 2543:1995
RESISTENCIA DE ROTURA AL RASGADO Tear strength / Résistance à la déchirure	Urdimbre Warp. Châine 110N Trama Weft. Trame 130N	EN ISO 13937-3:2001 EN ISO 13937-3:2001
RESISTENCIA A LA ABRASIÓN Abrasion resistance / Résistance à l'abrasion	> 30.000 Ciclos Cycles Cycles	BS 5690 BS 2543:1995
SOLIDEZ DE LOS COLORES A LA LUZ Colour fastness to light / Résistance à la lumière	5	UNE 40187 BS 1006-B02
SOLIDEZ A LA LIMPIEZA EN SECO Rubbing solvents / Résistance au nettoyage à sec	4-5	ISO 105-D01 UNE 40099
SOLIDEZ DE LOS COLORES AL LAVADO Rubbing fastness in humid state / Résistance au nettoyage	4-5	ISO 105-C06 UNE 40029
RESISTENCIA AL PILLING Pilling resistance / Résistance au pilling	4	ISO/DIS 12945-2
INSTRUCCIONES DE LAVADO Washing instructions / instructions de lavage		

Brunei.

COMPOSICIÓN Composition / Composition	100% PES.	
ANCHO Width / Largeur	140 cm · 54 in.	
PESO Weight / Poids	290 gr/m ² · 406 gr/ml	
RESISTENCIA DE LAS COSTURAS Seam strength / Résistance des coutures	Urdimbre Warp. Châine 19 mm Trama Weft. Trame 2.0 mm	BS 3320:1988 BS 2543:1995
RESISTENCIA A LA ABRASIÓN Abrasion resistance / Résistance à l'abrasion	> 30.000 Ciclos Cycles Cycles	BS 5690 BS 2543:1995
SOLIDEZ DE LOS COLORES A LA LUZ Colour fastness to light / Résistance à la lumière	5	UNE 40187 BS 1006-B02
SOLIDEZ A LA LIMPIEZA EN SECO Rubbing solvents / Résistance au nettoyage à sec	4-5	ISO 105-D01 UNE 40099
SOLIDEZ DE LOS COLORES AL LAVADO Rubbing fastness in humid state / Résistance au nettoyage	4-5	ISO 105-C06 UNE 40029
RESISTENCIA AL PILLING Pilling resistance / Résistance au pilling	4	ISO/DIS 12945-2
INSTRUCCIONES DE LAVADO Washing instructions / instructions de lavage		

cuidado de los tejidos.

instrucciones de lavado / washing instructions / instructions de lavage

Puede lavarse a máquina, con programa delicado a 30° C.
Washing machine and tumble-dryer can be used. With soft program at 30° C.
Lave-linge et sèche-linge peuvent être utilisés. Avec programme doux a 30° C.

No usar lejía.
Do not use bleach.
Ne pas utiliser eau de javel.

Planchar por la cara posterior, máxima 110°.
Iron only on the rear side, at a maximum of 110°.
Repasser par la face de derrière, 110° au maximum.

Puede utilizarse el lavado en seco.
Dry cleaning can also be used.
Nettoyage à sec peut être utilisé.

Evitar secar al sol.
Avoid drying in the sun.
Éviter sécher au soleil.





PERFECT
FABRICS.

 **FROCA**

www.froca.com